

Contour cutting from U-Disk/flash in SingMaster software

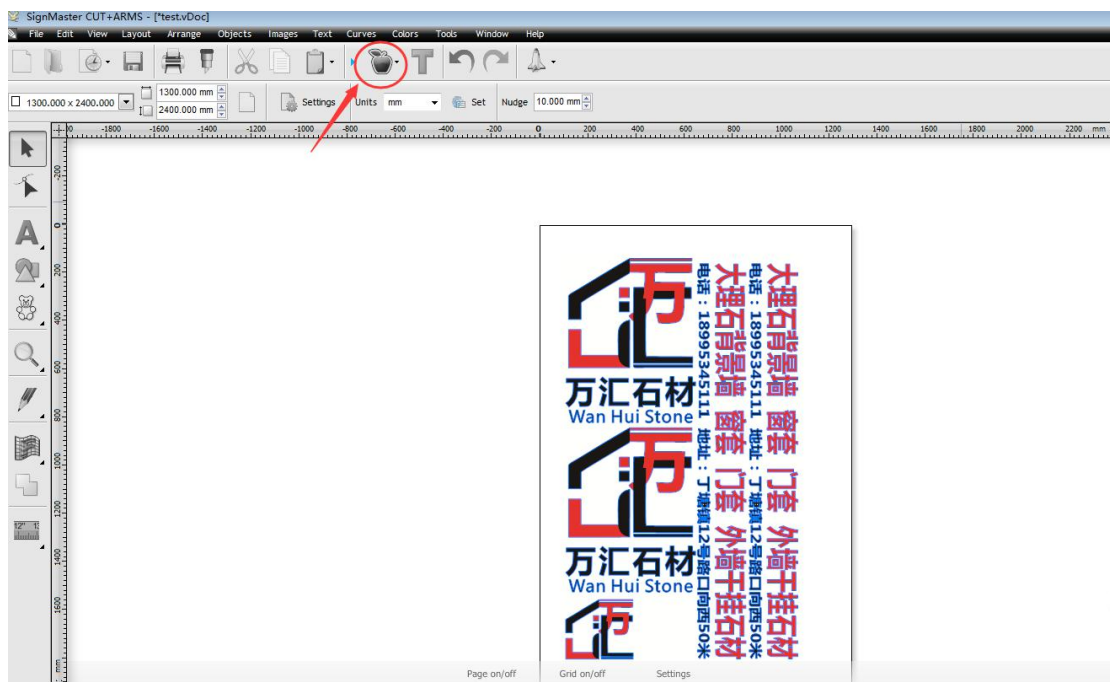
This instruction introduces how to use SignMaster software to realize the file from U-disk with contour cutting function.

Note:The cutting plotter must be standard with the U disk/flash disk port(for example, LIYU DF Series cutting plotters),it has no this function if the cutting plotter without the U disk port.

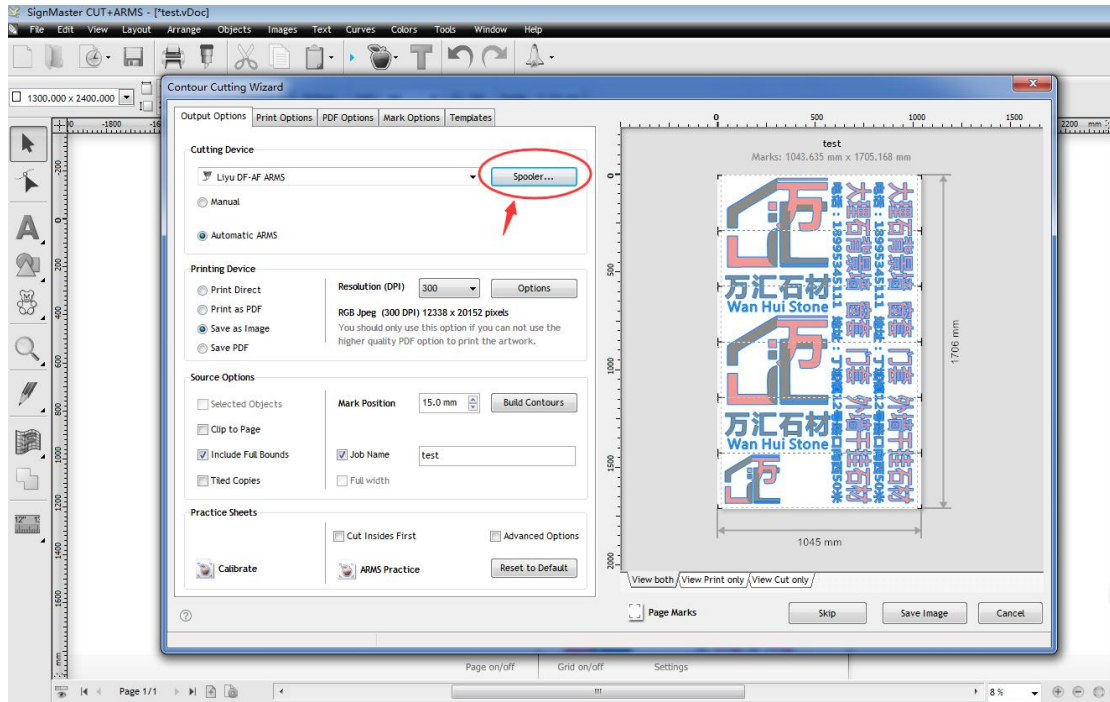
Some more details,For example: “Installation of the software”, “image import”, “add the contour cutting marks”, and “make the Origin point” ect ,Please refer to the instructions and videos in the SignMaster software(“help menu”).The following focuses on how to build the contour cutting files and how to operate the contour cutting function from U-disk directly.

1. Select the output device

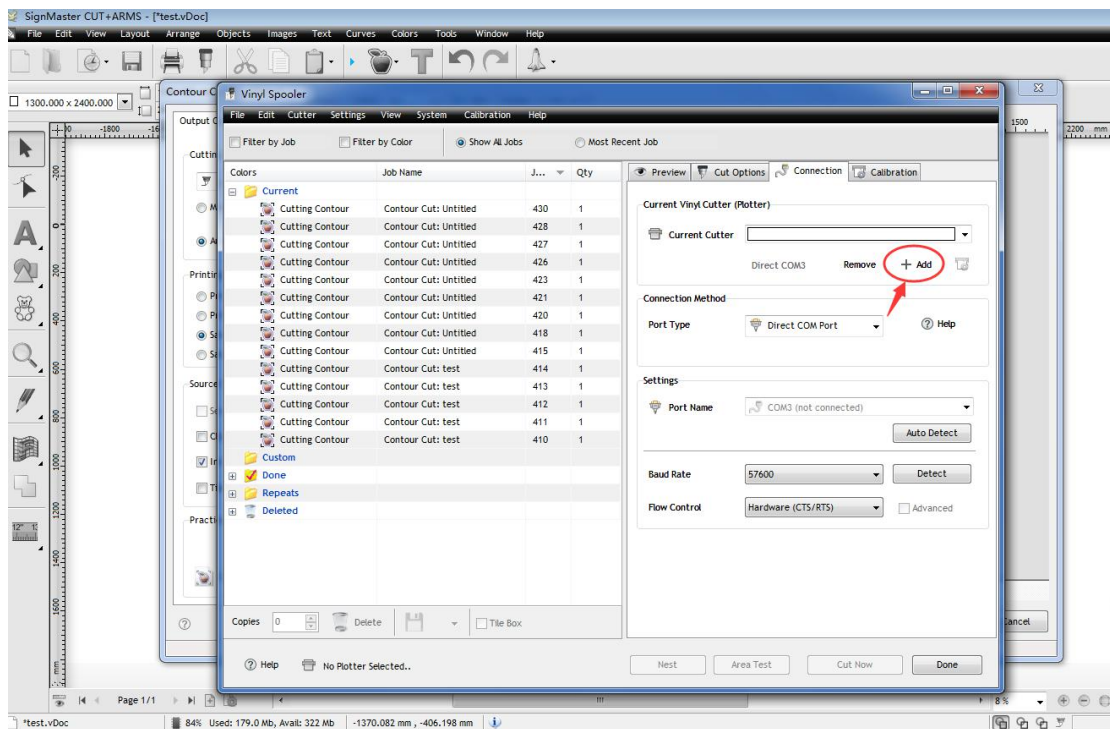
(1)After create the contour cutline(outline),then select the “Contour Cutting Wizard”:



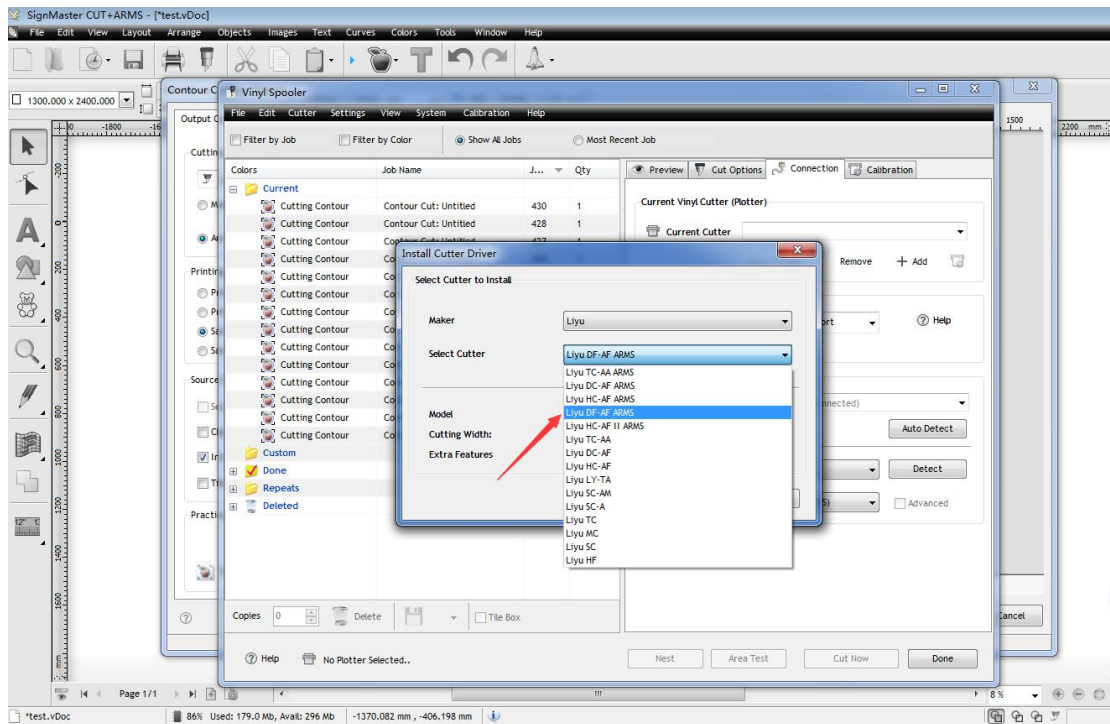
(2)Select “Spooler”, and add the output device.



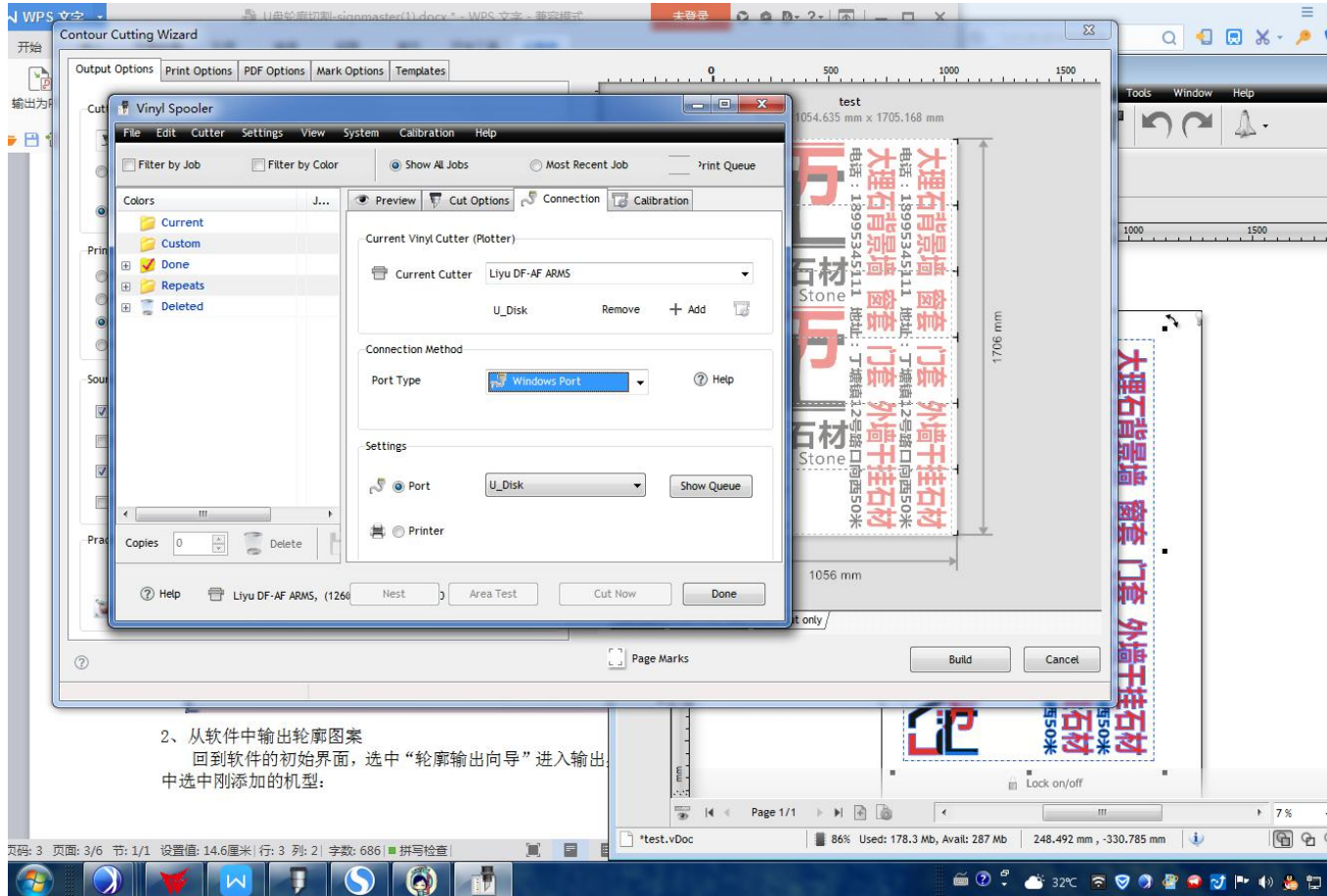
(3) Select "Add".



(4) Select Cutter model with the suffix ARMS corresponding to the type of the cutting plotters. (Liyu DC-AF ARMS, Liyu DF-AF ARMS or Liyu HC-AF II ARMS...)

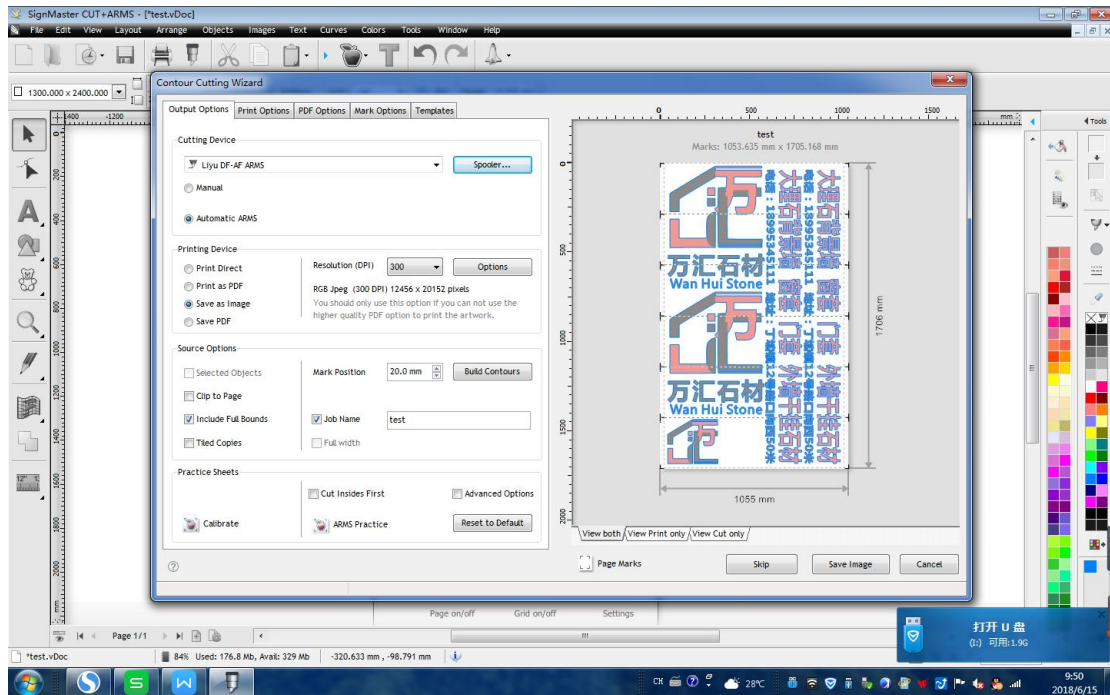


(5) Select “Install”, and then back to “Vinyl Spooler”, choose the Connection Method- Port Type - “Windows Port”. Settings- Port- “U_Disk”:

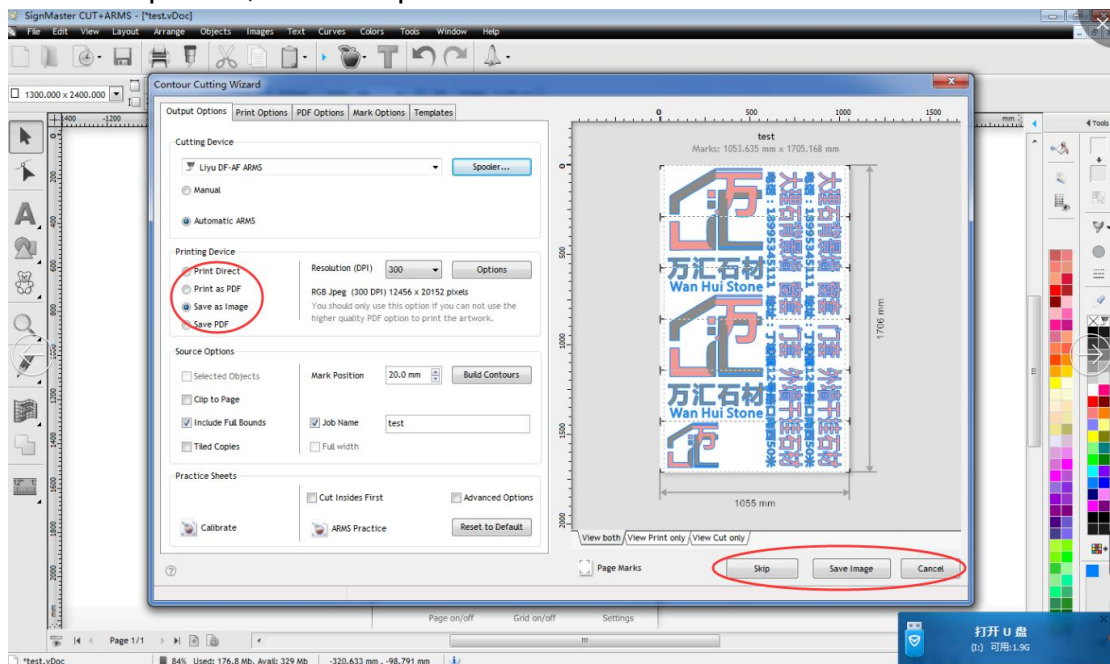


2. Output the image from the Software.

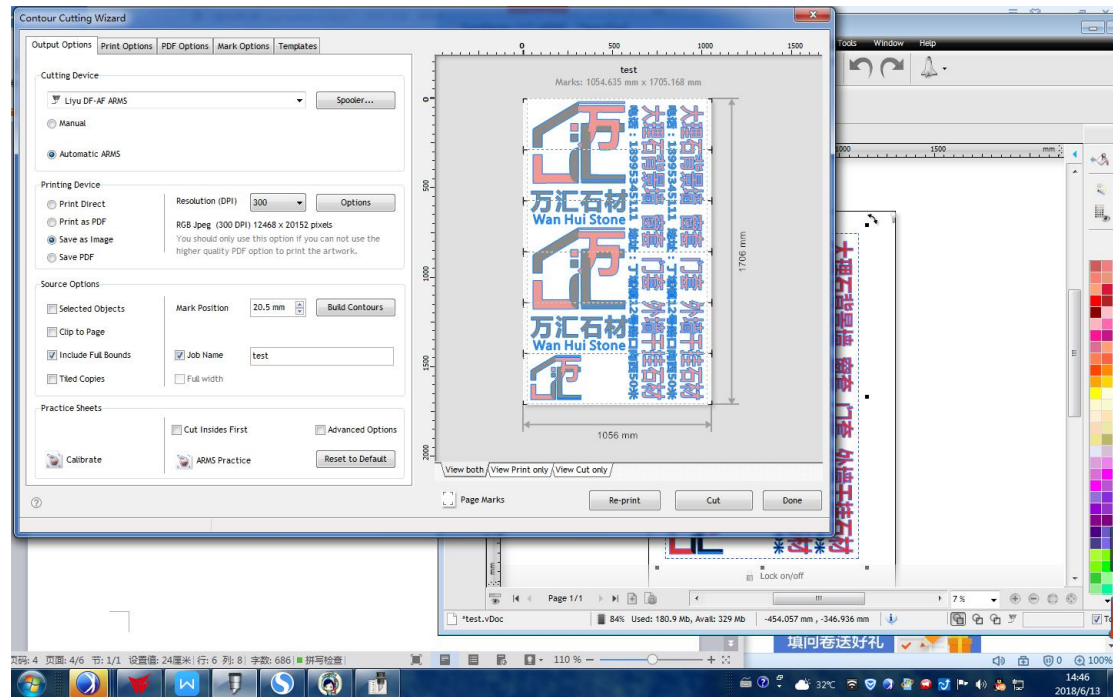
(1) Back to “Contour Cutting Wizard”, Select the same plotter type in “Cutting Device”: (Liyu DC-AF ARMS, Liyu DF-AF ARMS or Liyu HC-AF II ARMS...)



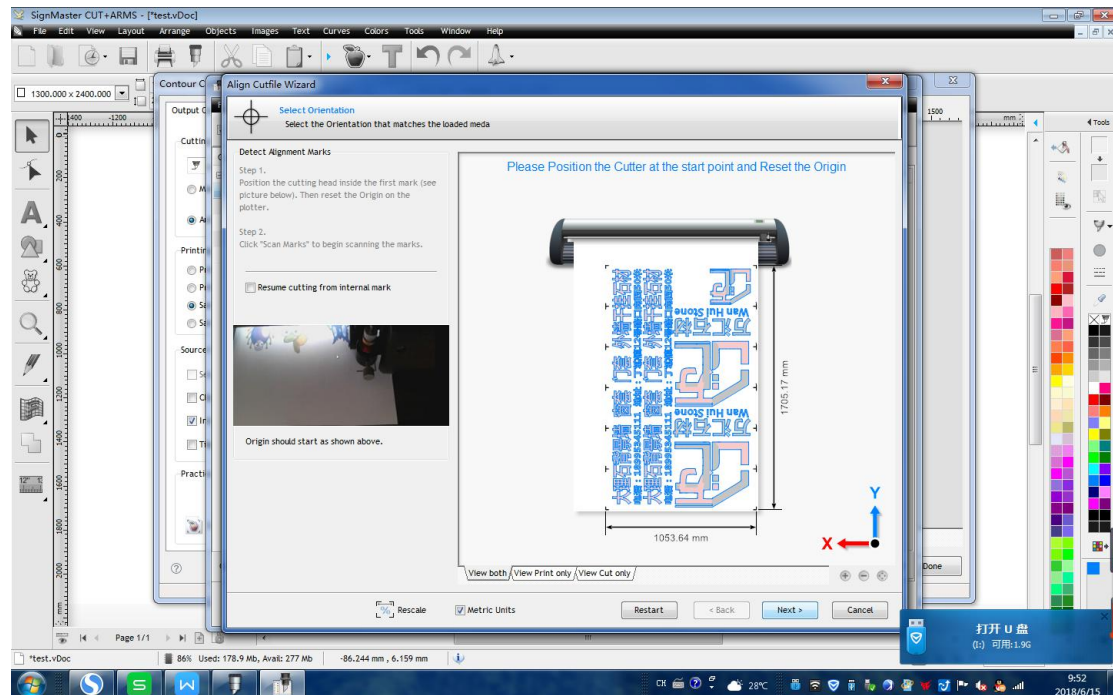
(2) If the image has not been printed, please choose to save the image if you need to output it from another device (you can choose to save the image in jpeg, tiff format, choose the same format as the imported image); if you print the output directly from this computer, select “Print Direct”, click “Print”; if the image has been printed, select “skip.”



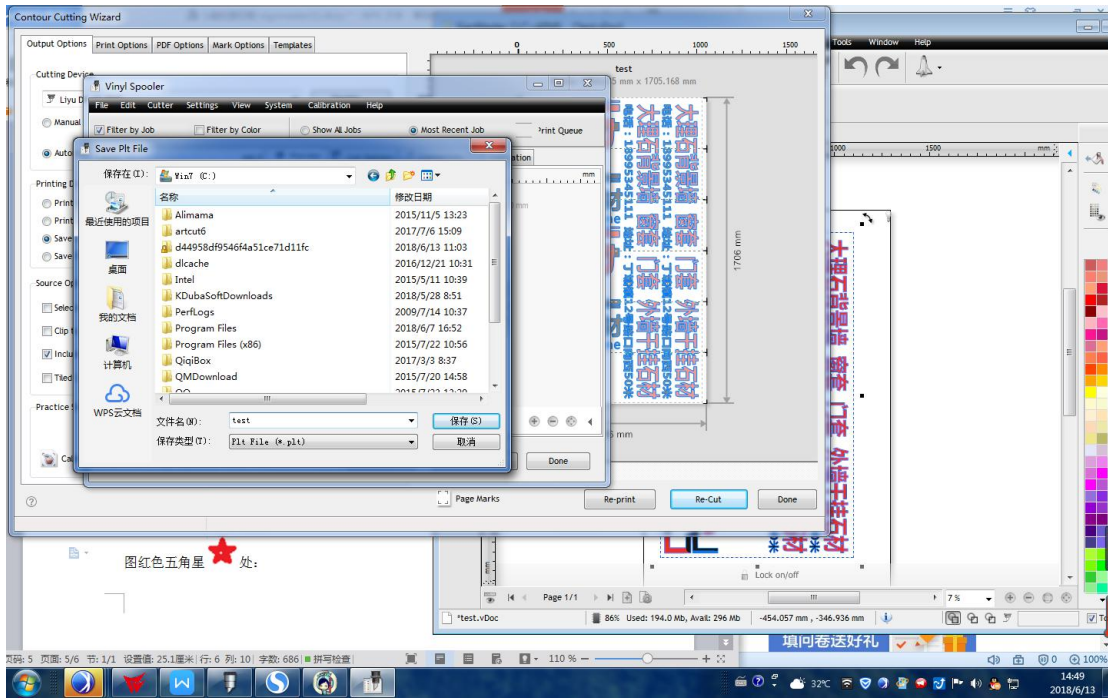
(3)Select "Cut".



(4)Select "Next".

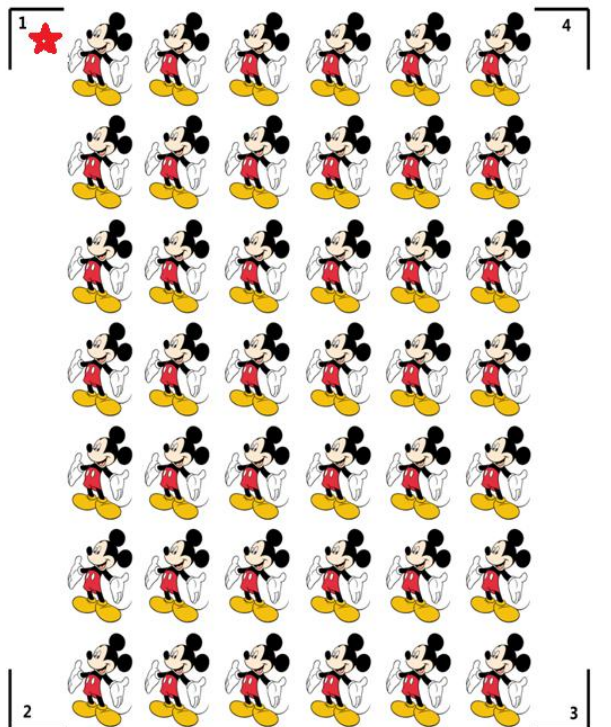


(5)Please save the file inside U-Disk/flash disk!(root directory)



3.Setting of the original point, According to Please refer to the instructions and videos in the SignMaster software("help menu")(the

inner blank of mark 1,see  area)



4.Make the contour cutting from U-Disk/Flash.How to realize the files from U-Disk,please refer to the details in Cutting Plotter Manual.(IV.

Introduction to the Functions-4.U-Disk).The simplified process is as follows:

- (1). When the machine is under the idle state, insert the U-Disk into the interface of the machine(right side of the machine).
- (2). Press the "U disk" button on the machine -- > machine LCD screen shows the file name, and press the "up" and "down" key to select the file "**test.plt**" that has just been saved to the U-Disk.
- (3). Press the "Enter" button on the machine.
- (4). The machine realize files for contour cutting.