

Manual New High press machine

Temperature Controller



Pressure Handle



Power Power



Strong Metal Spring



Plate groove is for fabrics layout.

INTRODUCTION

The heat press is a machine designed to imprint a design or graphic on fabric, such as T-shirts. It is done with the use of heat and pressure that is applied for a set period of time. The heat press can be used to put designs on porcelain plates and metal plates as well. With digital technology and advance design, the machine can produce greater pressure. Drawer style is convenient and safe for operation, especially for continuous production.

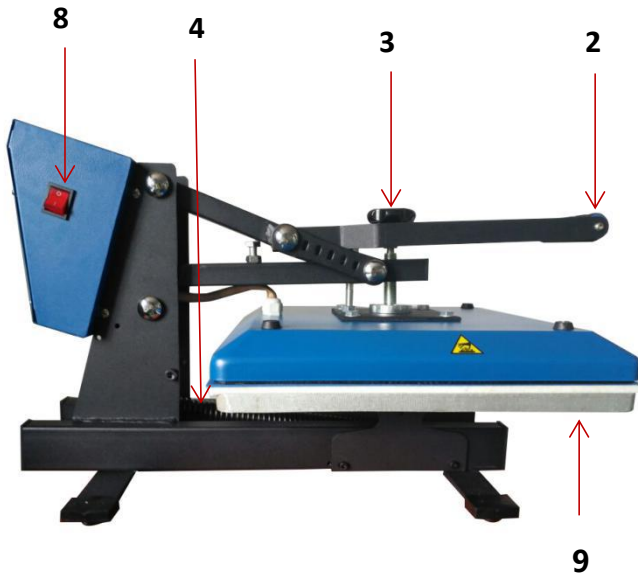
PARAMETERS

- Voltage: 220V
- Power:1800W
- Temperature Range: 0-499°C
- Temperature Accuracy: $\pm 1^\circ\text{C}$
- Timing Range: 0-999sec
- Platen Size: 15 x 15 inch (38 x 38 cm)

Features

- Easy to operate. The plate opens manually when time is up.
- The base uses a U groove workpiece to facilitate the use of T shirts.
- Microcomputer intelligent thermostat and time-integrated controller are adopted to ensure high accuracy, featuring with automatic temperature monitoring function(Temperature accuracy : $\pm 1^\circ\text{C}$).
- The integral cast heating pipe and aluminum heating plate promise safe, durable and uniform heating process.
- Digit timer control. Alarm sound will be made when the process is completed.
- Pressure Adjust Knob can adjust the pressure to desired value without much effort.
- The Work Table is equipped with silicone foam pad for high-temperature working.

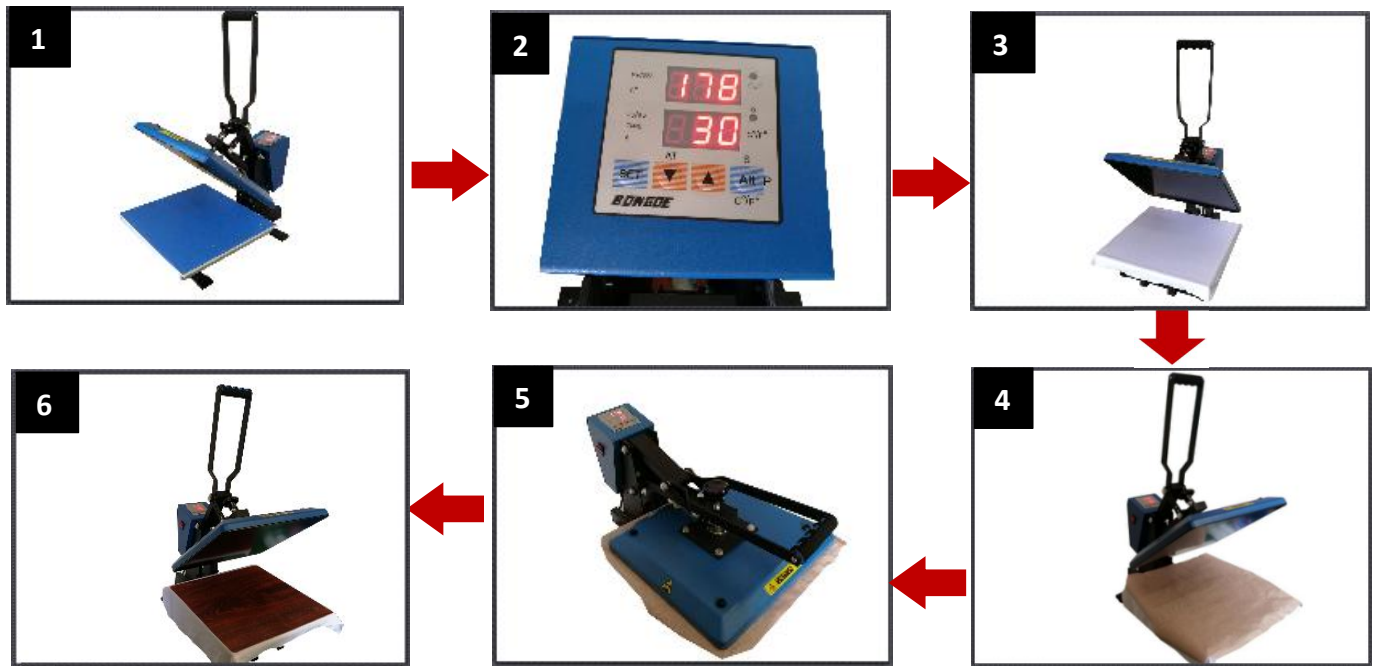
PARTS IDENTIFICATION



1	Control Panel	4	Nitrogen Spring	7	crossbeam
2	Press Handle	5	Heating Plate	8	Power Switch
3	Pressure Adjust Knob	6	Silicone Pad	9	Work Table

	Function Key(-)	Press this button to decrease the screen parameters under setting interface. (Press the button shortly to decrease the value by 1 while long press the button to rapidly decrease the value.) NOTE: Press this button for 10 seconds to restore the machine to default settings when the temperature fluctuates rapidly. The screen will keep flashing during the 10-15 minutes of reset process. Never unplug the machine or press any buttons until reset completed.
	Function Key(+)	Press this button to increase the screen parameters under setting interface. (Press the button shortly to increase the value by 1 while long press the button to rapidly increase the value.)
	Time timekeepi	According to the setting, once adjust the temperature setting, after setting up, and then set the confirmation, according to two times to adjust the time setting, time setting is complete, press the set confirmation, and press the third exit setting interface
	alternate	Press this button, 5 seconds convert Celsius degrees Fahrenheit
	FUSE	The fuse provides short-circuit or overload protection. Do not remove it under working status.

OPERATION



1. The power indicator will light on after connecting it to a 220V outlet and turning on the power switch. (The machine must be properly grounded when working.)

2. Temperature/time Settings

- Temperature Setting: Press SET button and the values displayed on the screen will keep flashing. Press Function Key (+) or Function Key (-) to adjust the value to desired number. Press SET again to return to main interface after setting.
- Time Setting: Press SET button twice and then the screen will display time setting value. Press Function Key (+) or Function Key (-) to adjust the value to desired number. Press SET again to return to main interface after setting.

3. Place the cloth on the heating plate after the machine reaches to the desired values. It's recommended to iron the cloth at first before adding designs. Put the transfer paper upon the cloth and make sure the side with a design faces to the cloth. Press down the handle until it closes totally. (Do not apply force

4. When the work process is over, count down to "0", the machine beeps and releases the handle to its original position.

Be careful not to hurt yourself to release the handle

5. Peel off the transfer paper immediately after printing.

6. Unplug the machine and turn off the switch when not in use.

NOTICE

- Adjust the working temperature, time and pressure according to different fabrics.
- Please take one piece of transfer paper for experiment to check its effect before massive production.

CAUTION

The working temperature should not exceed 500°F, or it may cause damages as described below:

- Deform the heating plate;
- Burn the fabrics;
- Deform or scorch the silicon pad.