

# Operation Manual

(Galaxy Hero GS-301A/GS-301B)

---

## Safety Instructions

---

**When using your heat press,  
basic precautions should always be followed,  
including the following:**

1. Read all instructions.
2. Use heat press only for its intended use.
3. To reduce the risk of electric shock, do not immerse the heat press in water or other liquids.
4. Never pull cord to disconnect from outlet, instead grasp plug and pull to disconnect.
5. Do not allow cord to touch hot surfaces, allow heat press to cool completely before storing.
6. Do not operate heat press with a damaged cord or if the equipment has been dropped or damaged. To reduce the risk of electric shock, do not disassemble or attempt to repair the heat press. Take it to a qualified service person for examination and repair. Incorrect assembly or repair could increase the risk of fire, electric shock, or injury to persons when the equipment is used.
7. This appliance is not intended for use by persons (including children) with reduced physical, sensory or mental capabilities, or lack of experience and knowledge, unless they have been given supervision or instruction concerning use of the appliance by a person responsible for their safety.
8. Close supervision is necessary for any heat press being used by or near children. Do not leave equipment unattended while connected.
9. Burns can occur when touching hot metal parts.
10. To reduce the likelihood of circuit overload, do not operate other high voltage equipment on the same circuit.
11. If an extension cord is necessary, then a 20 amperage rated cord should be used. Cords rated for less amperage may overheat. Care should be taken to arrange the cord so that it cannot be pulled or tripped over.

# Table Of Contents

Safety Instructions.....	1
Technical Parameters.....	3
Machine View.....	4
Control Panel Guide.....	5
Operating Instructions.....	6-9
● Connecting the System.....	6
● Turning the System On.....	6
● Adjusting the Temperature.....	7
● Adjusting the Time.....	7
● Adjusting the Pressure.....	8
● Printing and Pressing.....	9
Exploded Views And Parts List.....	10-13
Electrical Schematic.....	14

## Technical Parameters

---

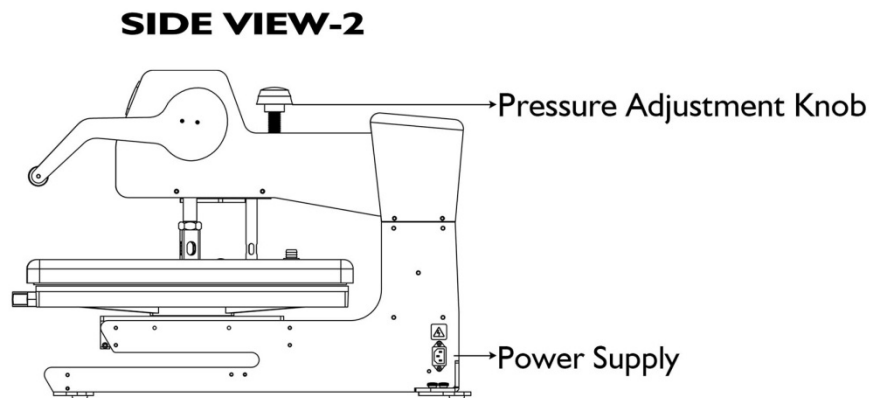
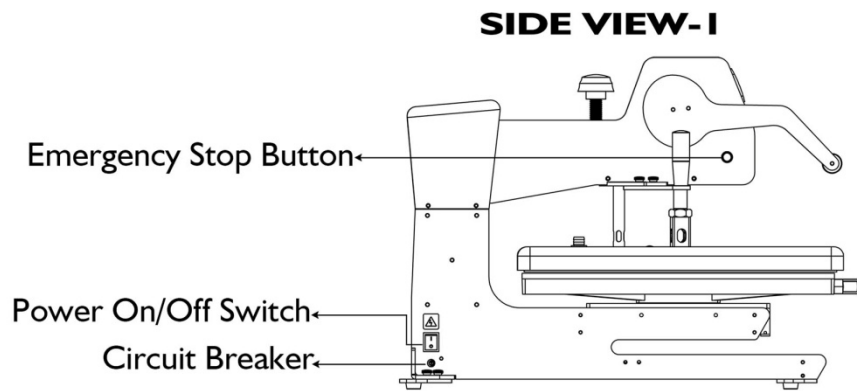
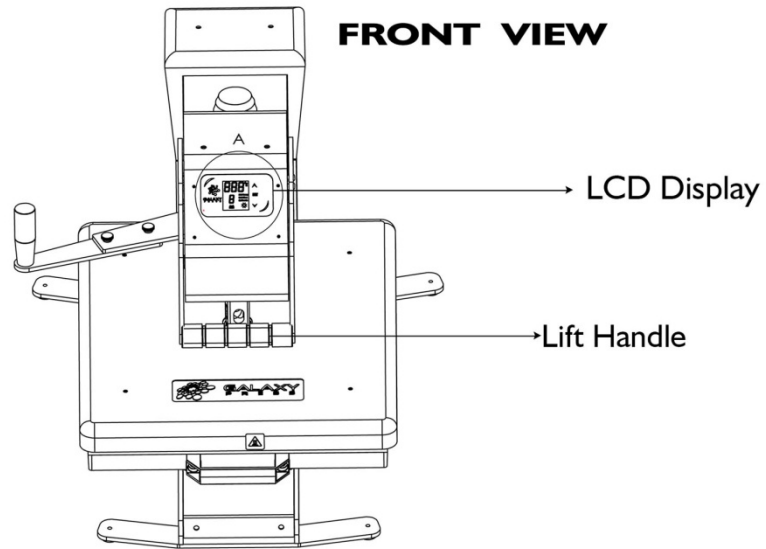
Model:	GS-301A-1620	GS-301B-1620
Heater Size:	16"×20" (406×508mm)	16"×20" (406×508mm)
Pressure Display:	Yes	Yes
Auto Open:	Yes	Yes
Slide-out Lower Platen:	Yes	Yes
Power(120volt)	1800W/16.4Amps	1800W/16.4Amps
Power(240volt)	1800W/8.2Amps	1800W/8.2Amps
Temperature Range:	Max.221℃/430°F	Max.221℃/430°F
Heating Up Time (180℃)	20minutes	20minutes
Time Range:	0~999S	0~999S
Way To Change Lower Platen:	Manual Change	"Ramlock" quick change system
Machine Size:	75×56×54cm	75×56×54cm
Packing Size:	89×65×64cm	89×65×64cm
Packing Weight:	85kg	85kg
Certificate:	CE,FCC	
Warranty:	10years on upper heat platen, 1 year on parts	

### Available Extra Lower Platen

LP-0404-B-S (4"×4")	Perfect for small items, youth apparel, and garments that have buttons, zippers, and seams in close proximity.
LP-1115-B-S(11"×15")	Most Valuable Platen. Easily decorate youth and women's size garments.
LP-0810-B-S (8"×10")	Heat print onto totes and polypropylene shopping bags. Slide bag onto the platen for efficient heat printing on both sides.
LP-0620-B-S(6"×20")	Decorate sleeves, pant legs, and youth size garments with ease.
LP-0610-B-S(6"×10")	Use for creating custom left chest logos without damaging seams, buttons, or zippers.
LP-Dia5-B-S(5"round)	Personalize the ends of duffle bags, sides of gym bags, and backpacks.
LP-1515-B-S(15"×15")	Standard size ,normally used in the market

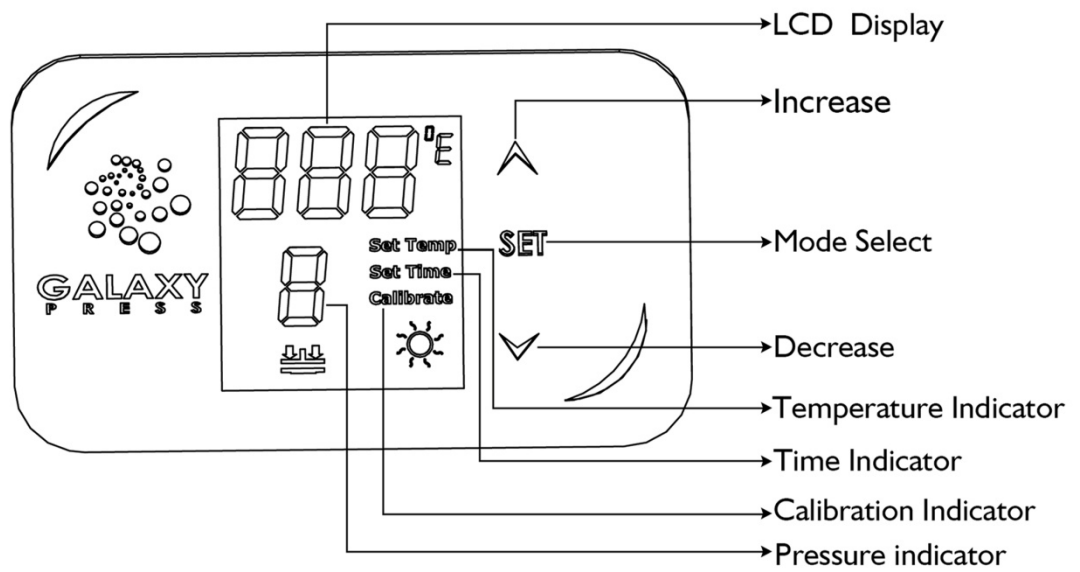
# Machine View

---



# Control Panel Guide

---



# Operation Instructions

---

## Connecting the System

### 1. CONNECT THE POWER CORD

1.1 Connect the power cord into a properly grounded electrical outlet with a sufficient amperage rating.

- **VOLTAGE**

120 Volt – The Galaxy Hero GS-301 requires a full 20 amp grounded circuit for 120 volt operation.

240 Volt – The Galaxy Hero GS-301 requires a full 10 amp grounded circuit for 240 volt operation.

- **EXTENSION CORDS** If used, should be as short as possible and not less than 12 gauge. Heavy duty cords are recommended.
- **CIRCUITS** that have less than 15 amps or that have other high demand equipment or appliances (especially more than one heat seal machine) plugged in, should not be used.

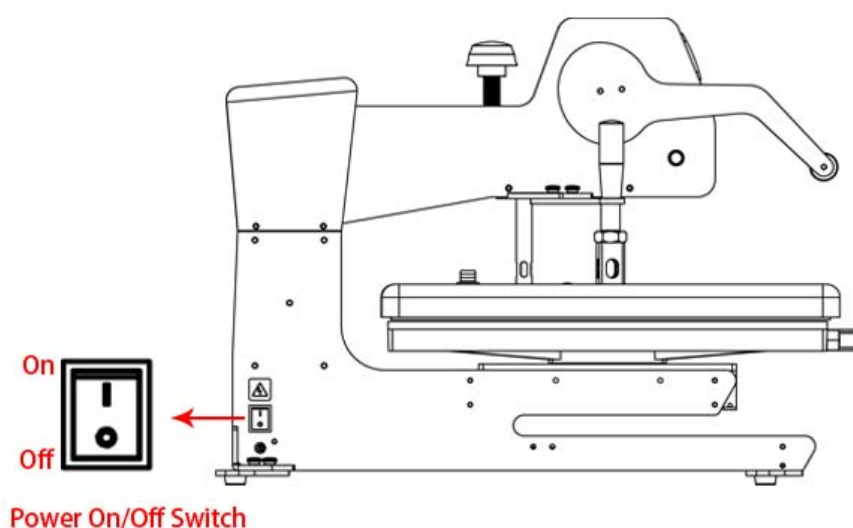
**NOTE:** If the supply cord is damaged, it must be replaced by the manufacturer, its service agent or a similarly qualified person in order to avoid hazard.

**CAUTION** Failure to follow these instructions will cause:

- 1) Erratic controller functions.
- 2) Inaccurate displays and slow heat-up.
- 3) The circuit breaker to disengage.

## Turn On the System

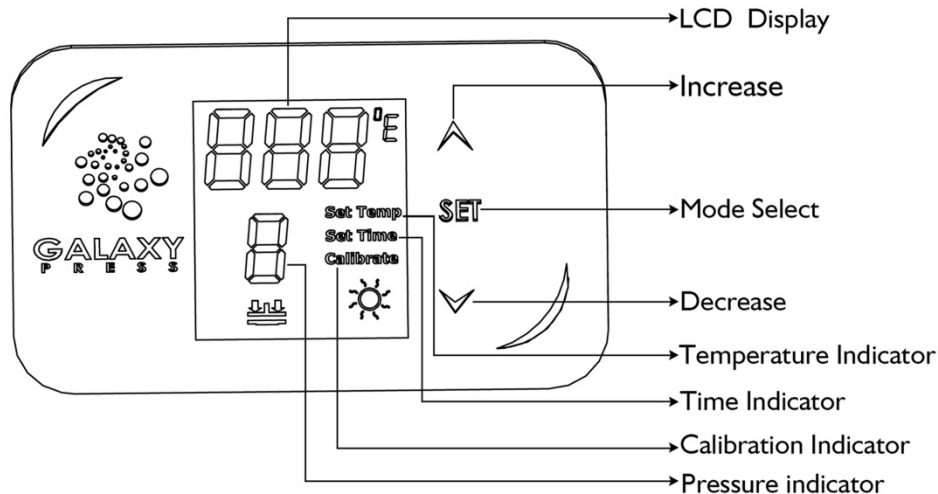
### 2. Switch The System On



## Adjusting the Temperature

### 3. ADJUST THE TEMPERATURE

- Locate the LCD Display on the Press.
- 3.1 Press the Mode Select button located in the center of the Control Panel.  
“Set Temp” lights located in the display will illuminate indicating you are in the adjust temperature mode.
- 3.2 Next, press the (-) button located to the bottom of the Mode Select button to lower the temperature setting, or press the (+) button located to top of the Mode Select button to raise the temperature setting. The temperature can be set from 170° F (76° C) to 430° F (220° C).
- The LCD will display changes as you make them.



## Adjusting the Time

### 4. ADJUST THE TIME

- 4.1 Once you have adjusted the temperature, press the Mode Select button again.  
“Set Time” lights located in the display will illuminate indicating you are in the adjust time mode.
- 4.2 Next, press the (-) button located to the bottom of the Mode Select button to lower the value, or press the (+) button located to top of the Mode Select button to raise the time value. The time setting range can be set from 0~999.
- The LCD will display changes as you make them.

## Adjusting the Pressure

### 5. ADJUST THE PRESSURE

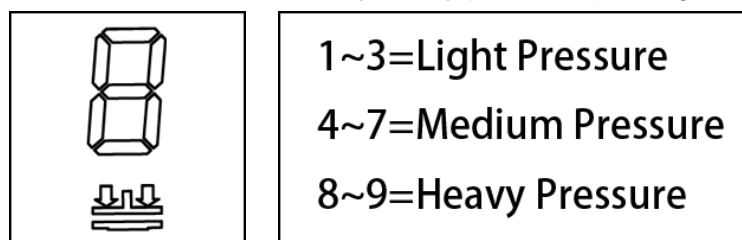
5.1 First, locate the LED Display on the Press.(See figure 1)

- The Pressure Adjustment Knob is located in the center of the heat platen(See figure 2)

5.2 Adjust the pressure by turning the knob clockwise to increase pressure and counter clockwise to decrease pressure.

### PRESSURE READOUT

A visual Pressure Readout is located on the lower right side of the LCD Display. When the handle is locked into the Print Position, a pressure number will be displayed. Readout will be on a scale of 0 - 9. A 0 Pressure readout would indicate no pressure at all and 9 would indicate very heavy pressure.(See figure 1)



5.3 To adjust the Pressure, simply turn the Pressure Adjustment Knob to the right or clockwise to increase the Pressure and to the left or counter clockwise to decrease the Pressure. The readout will display the Pressure when locked down in the print position.

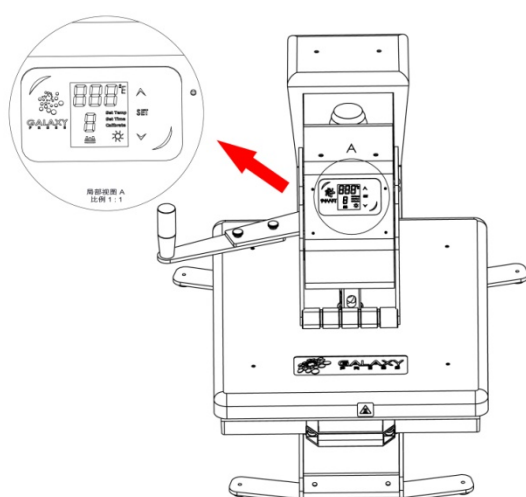


Figure 1

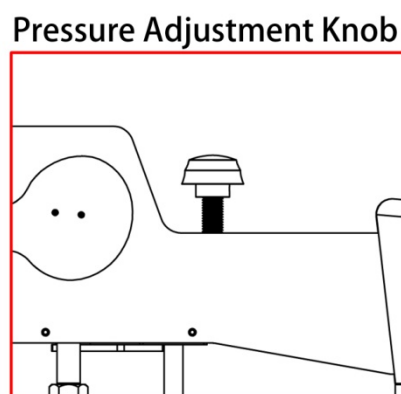


Figure 2

**REMEMBER:** To allow for the thickness of your garment when adjusting the pressure.



## Printing And Pressing

### 6. PRESS

- Once your equipment has reached the designated temperature:

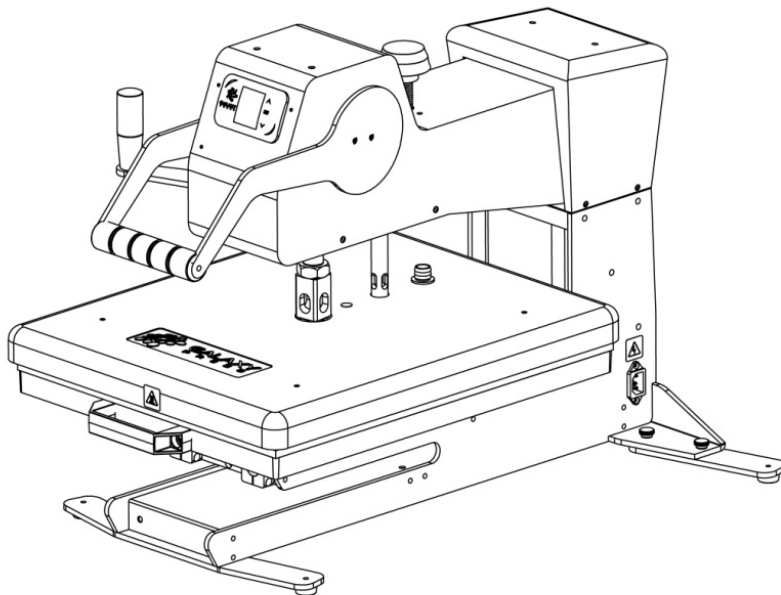
6.1 Position the garment and application and proceed to press.

6.2 Lower and lock the heat platen into the press position. This procedure will start the automatic timing process.

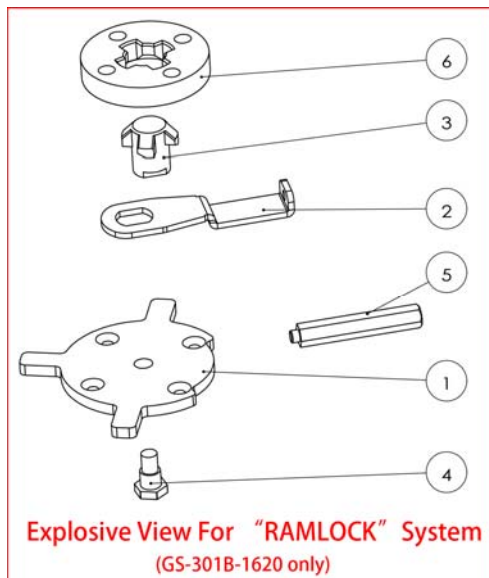
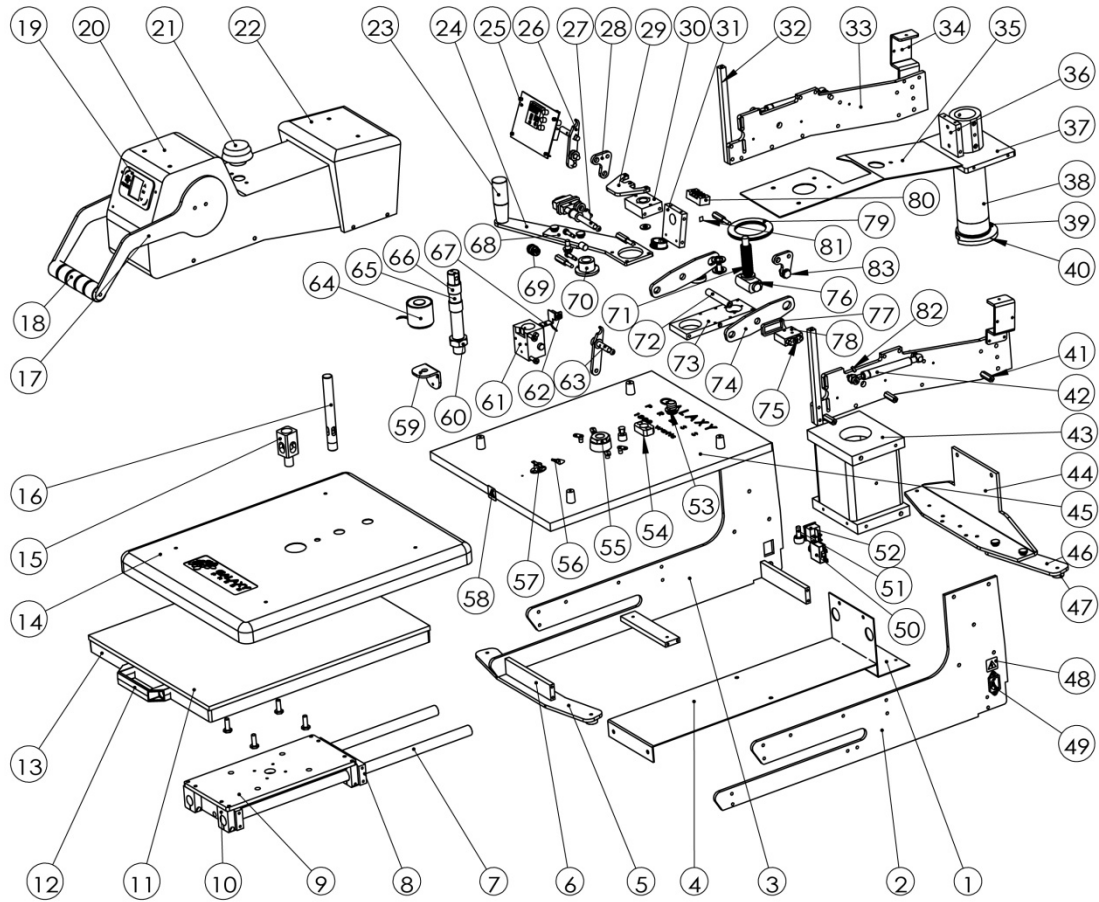
- The timer will automatically count down and lift the heat platen into the “UP” position when the press cycle is complete.

**NOTE:** Please be aware after time is complete, gas shocks will automatically release the platen into the “UP” position.

- The time will automatically re-set and you are ready to continue with the next application.



# Exploded Views



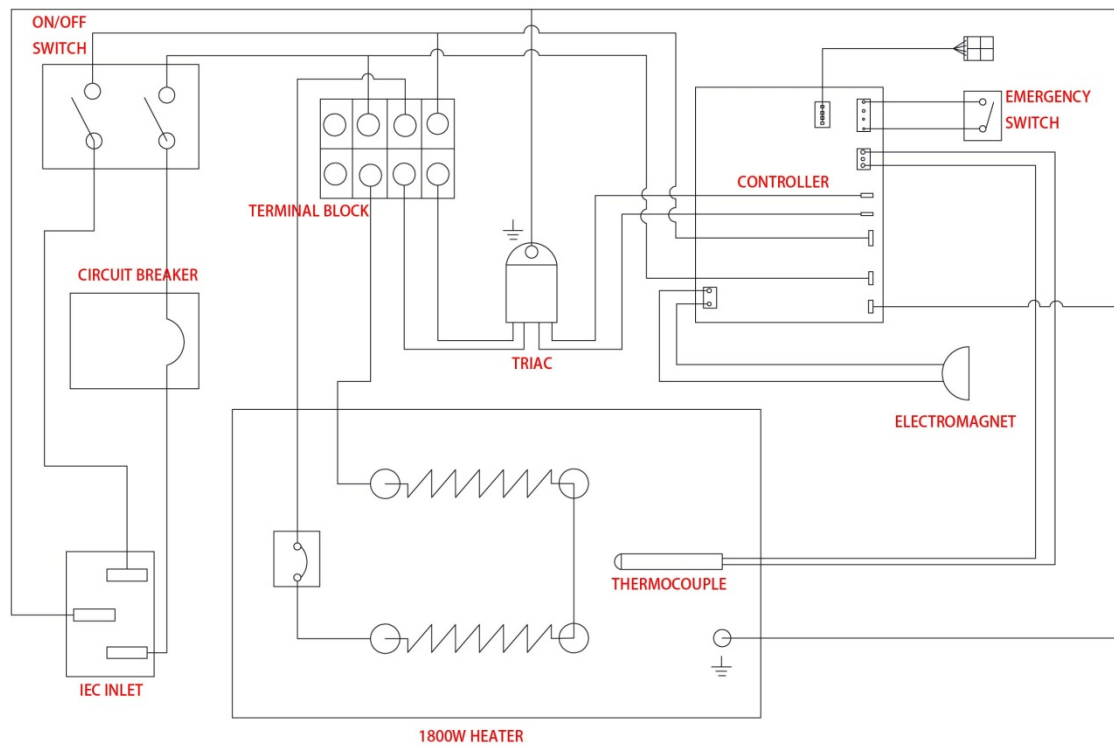
No.	Part Name(Chinese)	Part Name(English)	Part No.	Qty.
1	电线挡板 GH-29	Wires cover sheet	1701015	1
2	印台支架右侧板 GH-27	Machine stand right	1701013	1
3	印台支架左侧板 GH-28	Machine stand left	1701014	1
4	底座盖板 GH-32	Base cover	1701016	1
5	印台支架长底板 GH-05	Machine stand base	1701005	1
6	支架撑板A GC1-17A	Machine stand holder	1701044	3
7	轴杆 GCT-05	Plated bar	1701037	2
8	轴杆固定板 GCT-01	Plated bar fixed board	1200044	2
9	印台抽拉底座 GCT-03	Lower platen base	1200426	1
10	轴承座 GCT-02	Bearing block	1200648	4
11	硅胶垫 SP-1620-9-G	Silicon pad	1200539	1
12	铝方拉手 JZN43	Sliding handle	1800134	1
13	底板 LP-1620-B-S	Lower platen	1800388	1
14	发热盘罩板A GC1-46	Heat platen cover	1200450	1
15	吊板调整连接块 GH-60	Connecting block	1701001	1
16	定位杆 GH-33	Balance bar	1700994	1
17	压力手柄 GH-49	Handle	1701024	2
18	手柄轴胶套(内径19*T5*150mm) TB-150	Foam Grip	1701033	1
19	控制板面贴 STK-GS202	Display overlay	1600549	1
20	摇臂头罩 GH-44	Top cover assembly	1701022	1
21	调压旋钮塑胶浅绿 PK-LG	Pressure adjustment knob	1800479	1
22	摇臂尾罩 GH-45	Back cover assembly	1701023	1
23	电木手柄 GH-AC-4	Swing knob	1701031	1
24	摇头手柄滑板 GH-58	Swing arm	1701026	1
25	控制板 GSK-G04	Control board	1200655	1
26	肘夹连杆 GH-17	Connecting sheet	1701010	2
27	肘夹副销轴 GH-23	Steel pin	1700990	1
28	肘夹短连杆 GH-18	Connecting sheet short	1701011	2
29	磁吸板 GH-35	Magnetic sheet	1701017	1
30	调压支撑板 GH-13	Pressure adjustment holding block	1700987	1
31	大梁支撑板 GH-10	Machine arm holding block	1700985	1
32	头罩撑铁 GH-55	Top cover holding block	1701043	2
33	摇臂大梁 GH-08	Machine arm	1701008	2
34	罩板固定块 GH-54	Top cover fixed sheet	1701025	2
35	摇臂底盖 GH-43	Top cover base	1701021	1
36	大梁转柱连接板 GH-09	Connecting block	1700984	1
37	转柱轴承压板 GH-57	Bearing top board	1701000	1
38	转柱 GH-22	Main spindle	1700983	1
39	外卡簧60 GH-AC-2	Circlip	1701029	1
40	限位挡块 GH-19	Position block	1701012	1

41	支撑螺栓M6 GH-46	Holding bolt	1700996	6
42	阻尼弹簧/15-70-110N	Gas spring	1800057	2
43	方竖管 GH-01	Main spindle base	1700982	1
44	印台支架主底板 GH-06	Machine stand base (bottom)	1701006	1
45	发热板 HP-1620-B-S	Heat platen	1800985	
46	印台支架副底板 GH-07	Machine stand base(short)	1701007	2
47	脚垫 XD2512-148黑	Rubber foot	1800317	4
48	电压标签 ELE-K005	Voltage alarm sticker	1800735	1
49	IEC插座 DB-14-1	socket	1800344	1
50	过载保护器15A L1150271504-01	Circuit breaker	1800349	1
51	随动器-19 GH-AC-3	Follow up accessory	1701030	1
52	船型开关 RK1-01	On/off switch	1800346	1
53	波纹管接头黑 TCR-01-B	Elbow for tubing	1800135	1
54	定位杆底座 GH-34	Balance bar base	1700995	1
55	紧固螺母 GC1-104	Adjustment spindle base	1800142	1
56	热电偶 THC-01	Thermocouple	1800281	1
57	突跳式温控器 TMS-01	Thermostat	1800133	1
58	高温标签	High temperature label	1800950	1
59	电磁铁底座 GH-37	Electromagnet base	1701018	1
60	螺帽黑M22*1.5	Screw cap M22*1.5	1900931	1
61	吊板肘夹连接块 GH-60	Connecting block	1701001	1
62	柱形门磁（车牙加工）MC-0627	Magnet switch	1800620	1
63	肘夹主销轴 GH-22	Steel pin	1700989	2
64	电磁铁600N H4942	Electromagnet	1200071	1
65	吊板轴 GH-11	Steel pin	1700986	1
66	无油衬套2220 GH-AC-1	Oil free bush	1701028	2
67	门磁卡座 GH-40	Magnetic switch base	1701019	1
68	摇头手柄基座 GH-59	Swing arm	1701027	1
69	无灯锁 LA128-16Y	Emergency stop button	1200579	1
70	定位胶套 GH-30	Position block	1700993	1
71	调节左牙螺栓 GH-47A	Adjust spindle	1700997	1
72	柱栓12-74 GH-16	Thread pin 12-74	1701035	1
73	定位支撑板 GH-20	Supporting block	1701009	1
74	调压侧板 GH-15	Lift links	1701009	2
75	手柄垫块 GH-50	Handle block	1701003	2
76	调压横梁 GH-14	Adjust spindle base	1700988	1
77	气弹簧连杆 GH-41	Bridle links	1701020	2
78	肘夹联动块 GH-38	Connecting block	1701004	2
79	轴承6804 GH-AC-5	Bearing 6804	1701032	1
80	双排三位栅栏接线排 TB1503L	Terminal Block	1800345	1
82	磁铁 MT-01-B	Magnet	1800609	1
83	轴杆锁定螺丝 GH-24	Special locking screw	1700991	2

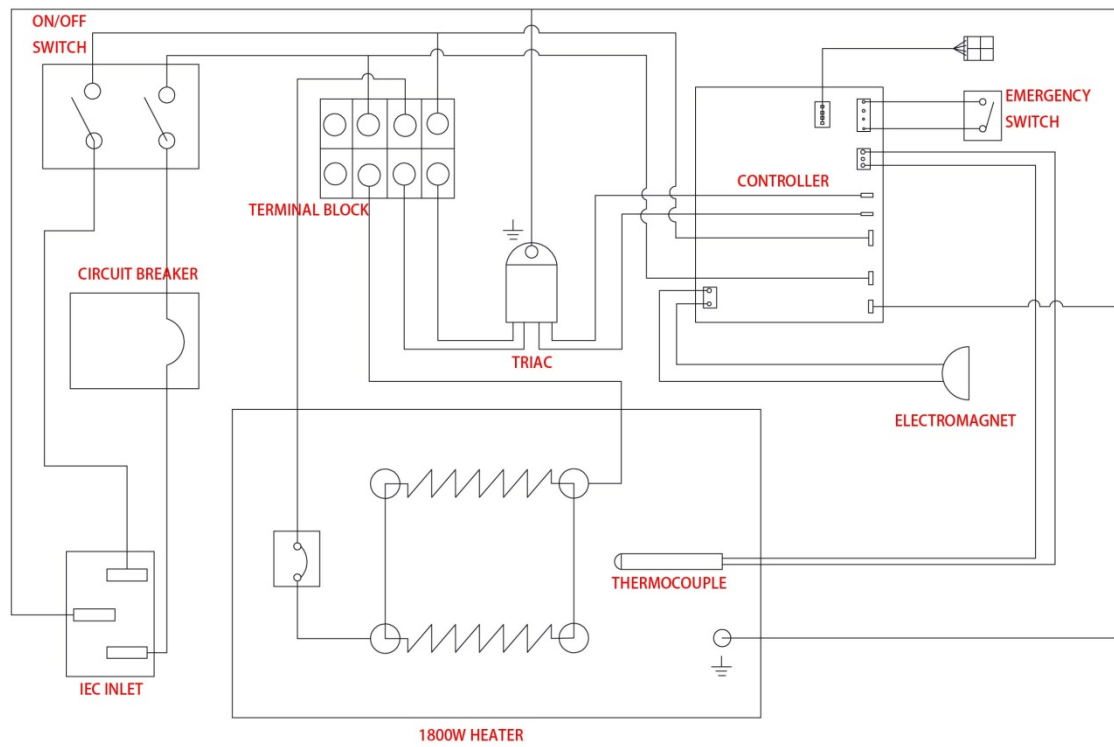
For "RAMLOCK" System (GS-104/GS-104S only)

No.	Part Name(Chinese)	Part Name(English)	Part No.	Qty.	Remark
1	嵌套底座 GH-112	Ramlock base	1200958	1	
2	嵌套锁扣 GH-113	Ramlock locking sheet	1200960	1	
3	嵌套突卡 GH-114	Ramlock locking set(male)	1200961	1	
4	轴杆锁定螺丝 GH-24	Ramlock locking screw	1900959	1	
5	嵌套手柄 GH-1131	Ramlock handle	1200956	1	
6	嵌套凹卡 GH-111	Ramlock locking set(female)	1200957	1	

# Electrical Schematic



**230V VERSION**



**120V VERSION**