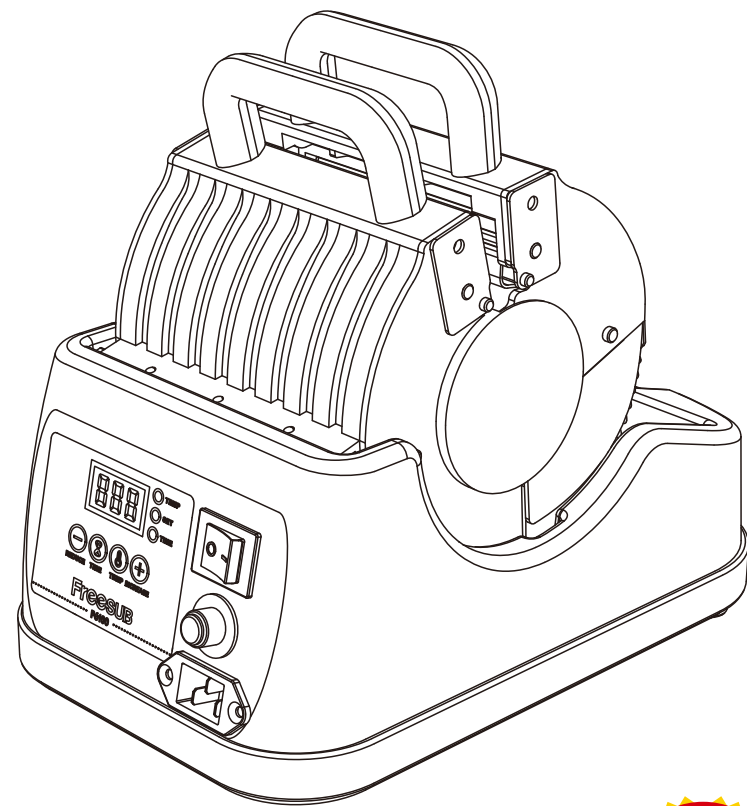


HEAT PRESS P6100



EN Start Here

Warnings must be followed carefully to avoid body injury.



Transfer Parameter(for reference)



Mug

270S

400°C(752°F)



Magic Mug

270S

400°C(752°F)



Sport bottle

240S

400°C(752°F)



Aluminum bottle

240S

400°C(752°F)



Small glass

330S

400°C(752°F)



Big glass

300S

400°C(752°F)

Main parameters

Product Name	Mug Heat Press Machine	Rated voltage	220V~ 110V~
Item No.	P6100	Rated frequency	50Hz 50-60Hz
Highest temperature	400°C 752°F	Rated power	600W 600W
Longest time	999S	Length of the cable	1.5M
Packing size	370*260*301mm		

Feature commentary

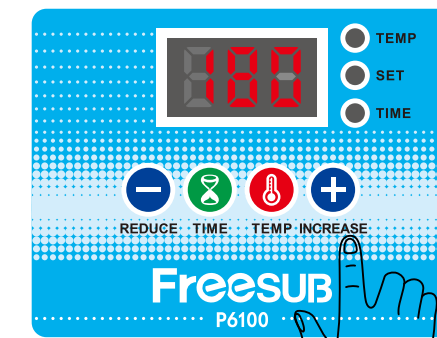
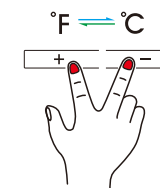
1

REDUCE

TIME

TEMP

INCREASE



Note: Press (+/-) to switch Fahrenheit and Celsius



REDUCE

1. Decrease the setting value
2. Press once to reset the countdown.



INCREASE

1. Increase the setting value
2. Click once to start the countdown.



TIME

1. Set time.
2. Press and hold for three seconds to set the automatic shutdown time (1-15 minutes)



TEMP

1. Set the temperature.
2. Press and hold for three seconds to correct the temperature. (±30°C)



Temperature conversion
°F ↔ °C
Fahrenheit~Celsius

Silicone Mug Clip



PM6123



PM6124

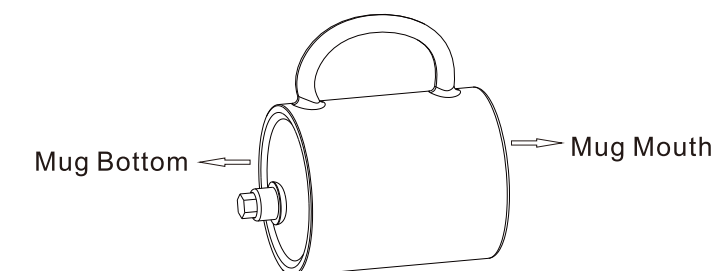
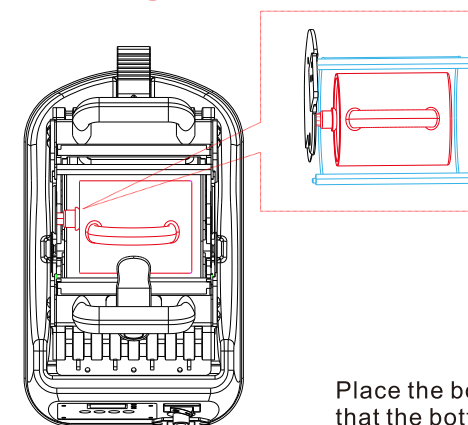


PM6125



PM6126

Warning



Place the bottom of the cup toward the positioning post and place it in the cup holder so that the bottom of the cup contacts the positioning post



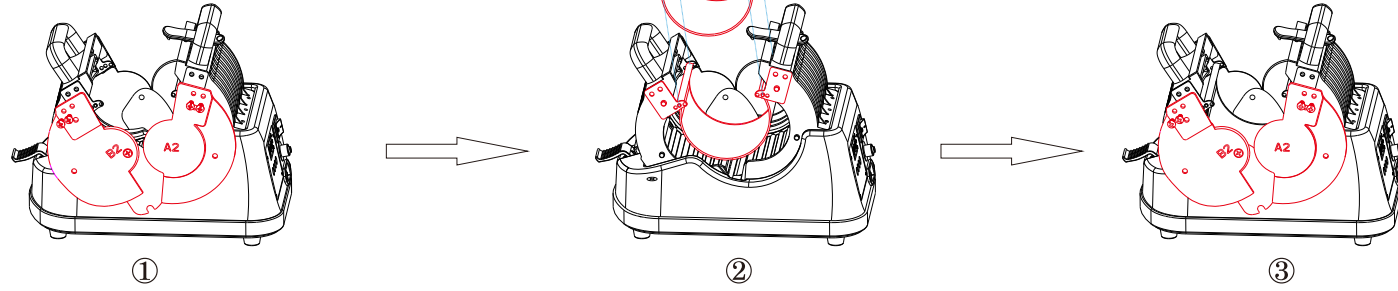
Accessories will vary according to the model customer selected, pictures for reference only.

Accessories installation diagram

Please perform all operations after power off

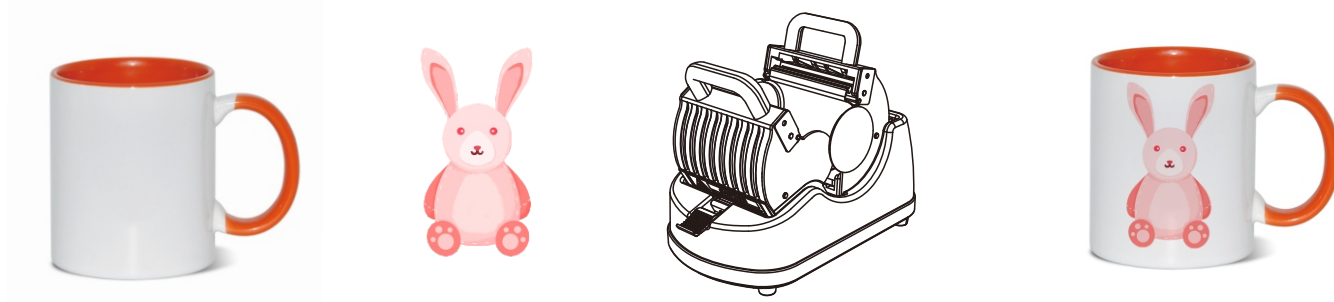


MUG CLIP INSTALLATION



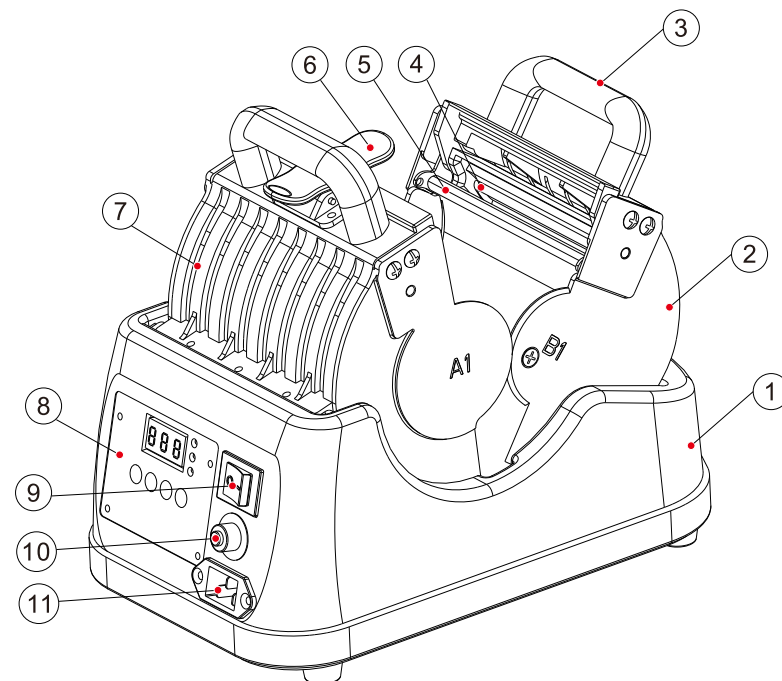
1. Remove the fixing screws on the bezels "A2" and "B2", and remove the bezels "A2" and "B2".
2. Loosen the iron piece, and place the cup holder face up, insert the ends of the iron posts on both sides of the cup holder into the corresponding holes on the iron piece, and then reset the iron piece.
3. Reset the bezel and lock the fixing screw.

Side Mug



1. Set time temperature.
2. Transfer the picture to the cup.
3. After the temperature is reached, put the cup into the baking machine and compact it.

Main spare parts



1. Base
2. Bezel
3. Handle
4. Fever sheet
5. Cup clip
6. Snap
7. Shell
8. Control Panel
9. Power switch
10. Heat insurance
11. Socket

Guarantee

The products are strictly based on the Consumer Protection Law of the People's Republic of China and the Product Quality Law of the People's Republic of China. The services are as follows:

Within 12 months, this product has the performance failure listed in the "Product Performance Failure Table". It is confirmed by SUNMETA and can be used for maintenance service free of charge. If out of validity, damage caused by force majeure, or human causes, the machine is not covered by the warranty, repair in charge.

Safety instruction: Before operating this unit, please read these instructions completely and save them

Notice

- ⚠ Keep unplug when moving the machine
- ⚠ Keep unplug when installing accessories
- ⚠ Place on a flat and stable platform and operate under ventilated conditions
- ⚠ Wear special protective equipment when operating the machine

Warning Improper use may result in electric shock, fire, personal injury and other damage.

- ⊘ Do not use this machine in a hazardous location
- ⊘ Do not use when the machine is not working properly.
- ⊘ Do not allow children or adults who do not understand this manual to operate this machine.
- ⊘ Do not disassemble and repair this machine.
- ⊘ Do not use an unsuitable AC outlet.
- ⊘ Do not touch the heating plate when the machine heating.



Warning

warranty content

Product Performance Failure Table

Machine body	Parts of the machine itself (excluding main parts)	One year	Fault 1	The machine cannot be used normally according to the operating procedure
Main parts	Ceramic heating plate	One year	Fault 2	Heating plate not heating
	PCBA(circuit board)	One year	Fault 3	Display error
	Silicone Mug Clip	Free consumables, no warranty.		

Circuit Board Wiring Method

2

Electrical schematic diagram

1. Hot plate input hot wire
2. Main incoming line zero line N
3. Main incoming line L
4. Zero line of heating plate input
5. Button switch line
6. Motherboard and display cable
7. NTC temperature probe line
8. Thermocouple-
9. Thermocouple+

